

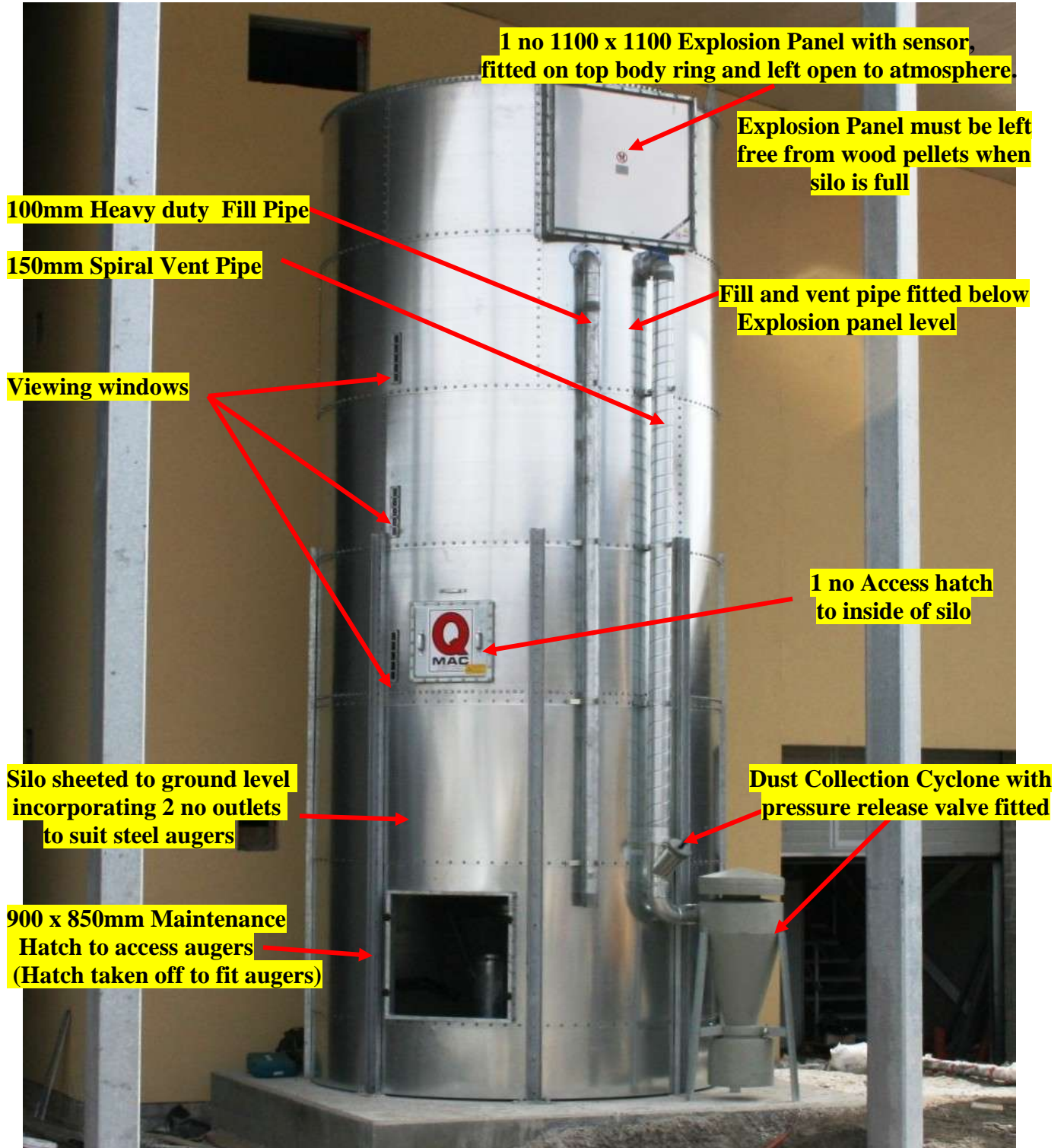


T.C. McKEOWN ENGINEERING
'ELAGH HOUSE'
161 BALLYMAGUIRE ROAD
STEWARTSTOWN,
DUNGANNON,
CO TYRONE, N. IRELAND
BT71 5NN



33 m³ GALVANISED WOOD PELLET Q MAC SILO (approx. 21.5 TONNE) 3M DIAMETER SHEETED TO GROUND LEVEL WITH OVERALL HEIGHT OF 8.1M.

Cubic meters worked out at 650 kgs/m³



REF – PRIMARY SCHOOL, AVIEMORE, SCOTLAND



T.C. McKEOWN ENGINEERING
'ELAGH HOUSE'
161 BALLYMAGUIRE ROAD
STEWARTSTOWN,
DUNGANNON,
CO TYRONE, N. IRELAND
BT71 5NN



Fill pipe inside directed to bottom centre of silo to ensure even filling of wood pellets

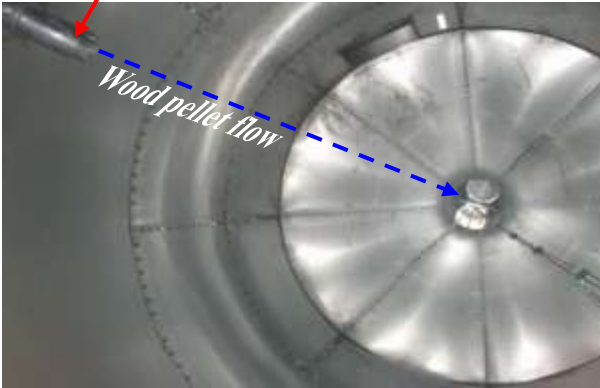
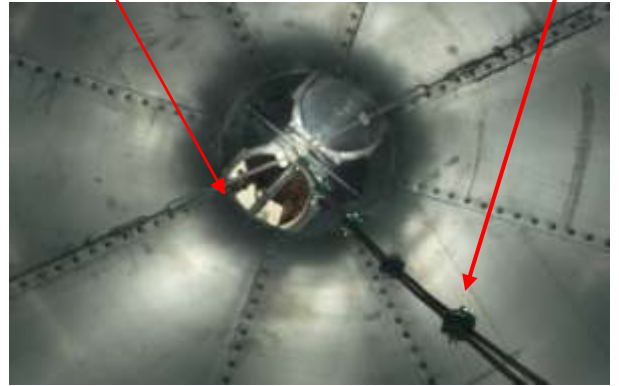


Photo showing sensor cables fitted inside silo to measure the volume of wood pellets on a display monitor



Sensor unit on roof of silo covered to protect from elements.
Cable electrodes hang vertically inside silo as near centre as possible for accurate reading.
Sensor unit wired to ground level display monitor.



Silo on lorry at our factory before delivery to Aviemore



Silo being erected unto concrete base by our transport and then securely bolted down.

Telephone:- +44 (0)28 8673 7312
E-mail :-info@qmacsilos.co.uk

Fax:- +44 (0)28 8673 6700
www.info@qmacsilos.co.uk